

PLEASE CHECK WWW.MOLEX.COM FOR LATEST PART INFORMATION

Part Number: [0191640006](#)
Status: **Active**
Description: Perma-Seal™ Spade Tongue Terminal for 18-22 AWG Wire, Stud Size 6

Agency Certification

CSA LR18689
 UL E32244

General

Product Family Ring and Spade Terminals
 Series [19164](#)
 Crimp Quality Equipment Yes
 Mil-Spec N/A
 MolexKits Yes
 Product Name Perma-Seal™
 Type Spade

Physical

Barrel Type Closed
 Flammability 94V-2
 Insulation NiAc™
 Material - Plating Mating Tin
 Packaging Type Bag
 Plating min: Mating (µin) 100
 Plating min: Mating (µm) 2.5
 Plating min: Termination (µin) 100
 Plating min: Termination (µm) 2.5
 Stud Size 6 (M3.5)
 Wire Insulation Diameter 5.97mm (.235")
 Wire Size AWG 18, 20, 22
 Wire Size mm² 0.38 - 0.96

Material Info

Old Part Number SA-235-06

Reference - Drawing Numbers

Sales Drawing SD-19164-025

EU RoHS

ELV and RoHS Compliant

REACH SVHC

Not Reviewed

Halogen-Free

Status

Not Reviewed

China RoHS



Need more information on product environmental compliance?

Email productcompliance@molex.com
 For a multiple part number RoHS Certificate of Compliance, [click here](#)

Please visit the [Contact Us](#) section for any non-product compliance questions.

Search Parts in this Series

[19164Series](#)

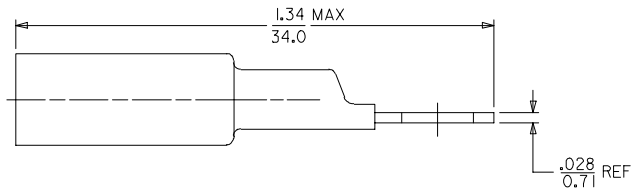
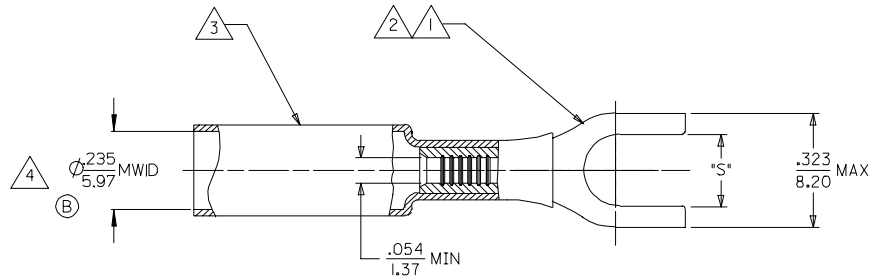
Application Tooling | FAQ

Tooling specifications and manuals are found by selecting the products below. Crimp Height Specifications are then contained in the Application Tooling Specification document.

Global

| Description | Product # |
|--------------------------------|----------------------------|
| Power Crimp Tool | 0640057400 |
| Head for Prema-Seal™ Terminals | |
| 10-22 AWG | |
| Hand Crimp Tool, UL | 0640017400 |
| Approved | |

| MATERIAL NUMBER | ENGINEERING NUMBER | STUD SIZE | SLOT 'S' ±0.10 ±0.25 |
|-----------------|--------------------|-----------|----------------------|
| 191640006 | SA-235-06 | #6 | Ø.146/3.71 |
| 191640007 | SA-235-08 | #8 | Ø.173/4.39 |
| 191640008 | SA-235-10 | #10 | Ø.198/5.03 |



NOTES:

- 1. TERMINAL MATERIAL: COPPER ALLOY
- 2. FINISH: ELECTRO TIN PLATE.
- 3. INSULATION MATERIAL: HEAT SHRINKABLE TUBING WITH HOTMELT ADHESIVE INNER LINER. COLOR: RED.
- 4. MWID = MAXIMUM WIRE INSULATION DIAMETER.

SALES DRAWING

| | | | | | | | | |
|-----------------------------------------------------------------------------------------------------------------------------------------|-------------------------------|----------------------------------------------------------------------------------------------------------------|-----------------------------------------|-------------------------------------------------------------------------------------------------------------------------------|--------------------------------------------|---------------------------|----------------------|------------------------------|
| CHANGED MWID EC NO: ETC2006-0154 DRAWN BY: ASAYDEH CHKD: JLOMASTRO APPR: JPAWLICK 2005/12/13 2005/12/13 2005/12/13 | QUALITY SYMBOLS ▽=0 ▽=0 | GENERAL TOLERANCES (UNLESS SPECIFIED) | | DIMENSION STYLE IN/MM | | SCALE --- | DESIGN UNITS INCH | THIRD ANGLE PROJECTION |
| | | 4 PLACES ± --- ± --- 3 PLACES ± --- ± --- 2 PLACES ± --- ± --- 1 PLACE ± --- ± --- ANGULAR ± --- ° | DRAWN BY ASAYDEH DATE 05/12/13 | CHECKED BY JLOMASTRO DATE 05/12/13 | APPROVED BY RDEROSS DATE 05/12/13 | MATERIAL NO. SEE CHART | | DOCUMENT NO. SD-19164-025 |
| DRAFT WHERE APPLICABLE MUST REMAIN WITHIN DIMENSIONS | | | | THIS DRAWING CONTAINS INFORMATION THAT IS PROPRIETARY TO MOLEX INCORPORATED AND SHOULD NOT BE USED WITHOUT WRITTEN PERMISSION | | | | |